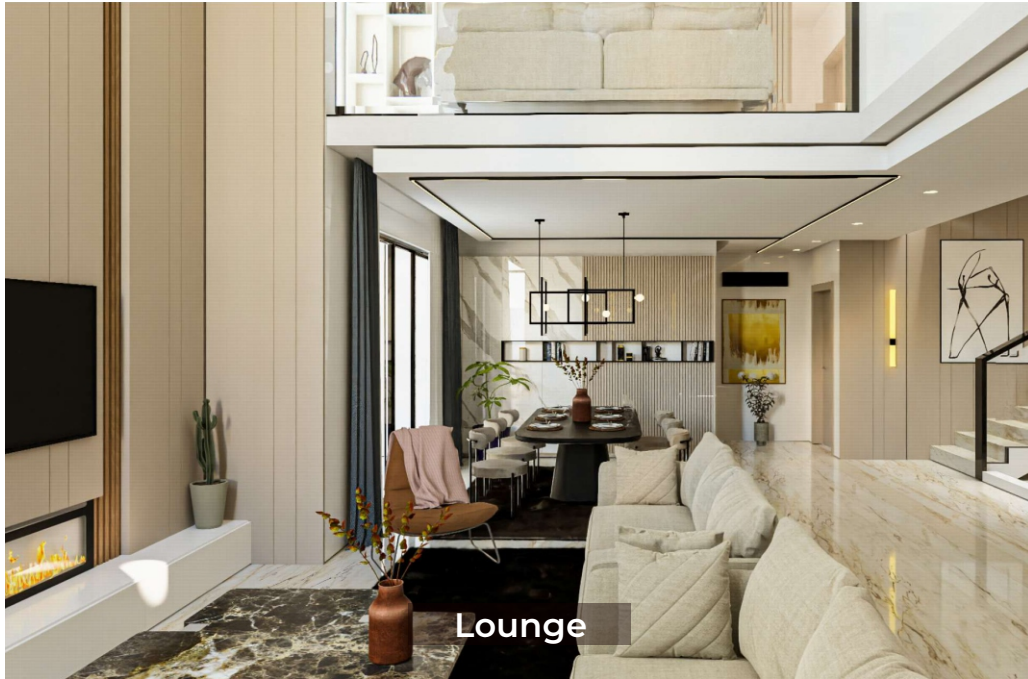




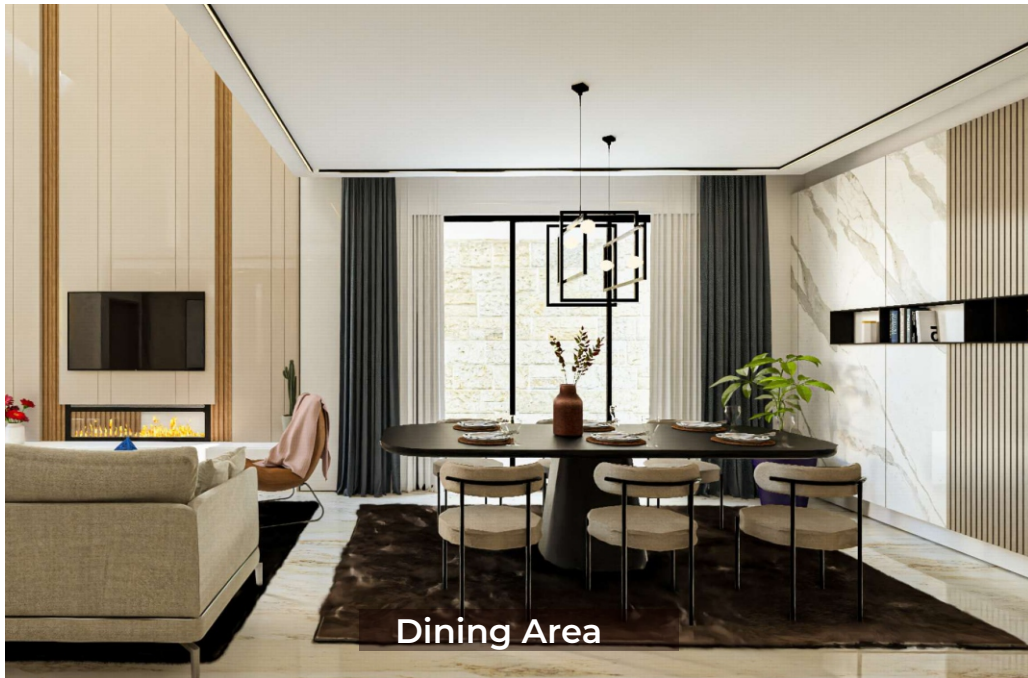
TYMI GARDENS
By Alhikma Properties



Where Luxury
Meets
Serenity



Lounge



Dining Area



BEYOND WALLS, INTO LUXURY LIVING

Elevate your living experience with architectural poetry, Alhikma villas aren't merely structures; they are symphonies. Nestled in the tranquil embrace of Katani, just a heartbeat away from Syokimau and a mere 10-minute drive to JKIA. It's a gated community that redefine family living. Each Five and Four bedroom villa mean space for laughter, secrets, and bedtime stories. Step across the threshold, and you'll feel it - the gentle embrace of plush sofas, the play of natural light on silk curtains. Alhikma Villas: Not just a place to live; a canvas for your life's chapters.



A DISCERNING CRAFTED ELEMENT

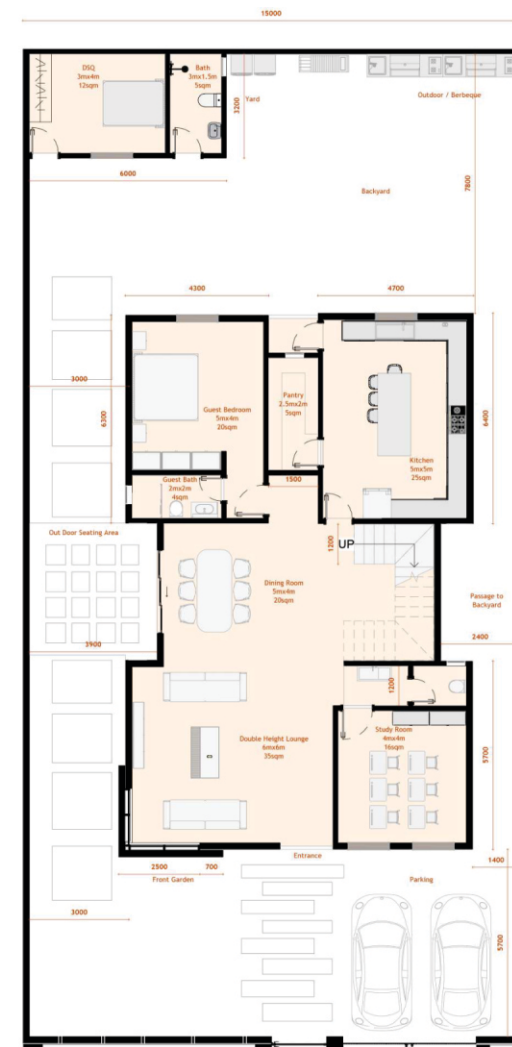
Step inside, and the air changes, From our mable floors, vaulted ceilings and our feature wall captures the artistic heart of each space. The modern dining area is adjacent to an open kitchen, both stylish and elegant. Gather in the gourmet kitchen, where culinary dreams come alive. And when the day winds down, retreat to your master suite - the ultimate sanctuary. Welcome home to luxury, love, and breathtaking sunsets



Kitchen



Kids Bedroom

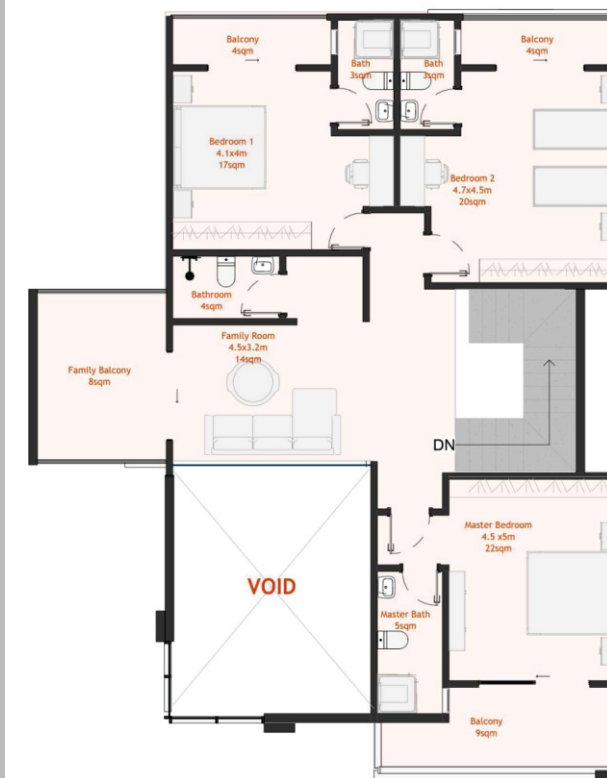


GROUND FLOOR PLAN
SCALE 1:100

GROUND FLOOR PLAN 145SQM

AREA SIZES

- 1 LOUNGE 35SQM
- 2 DINING 20SQM
- 3 STUDY 16SQM
- 4 KITCHEN 25SQM
- 5 PANTRY 5SQM
- 6 GUEST BEDROOM 20SQM
- 7 GUEST BATH 4SQM
- 8 DSQ 12SM
- 9 DSQ BATH 5SQM
- 10 CLOACK 3SQM



FIRST FLOOR PLAN
SCALE 1:100

FIRST FLOOR PLAN 95SQM

AREAS SIZES

- 1 FAMILY ROOM 14SQM
- 2 BEDROOM 1 17SQM
- 3 BEDROOM 2 20SQM
- 4 MASTER BEDROOM 22SQM
- 5 MASTER BATH 5SQM
- 6 MASTER BALCONY 9SQM
- 7 FAMILY BALCONY 8SQM



Master En-suite



Playing Area



Mosque

SALIENT FEATURES

- ☑ 4 & 5 Bedroom units
- ☑ Spacious Lounge and Dining Areas
- ☑ Well Finished Kitchen with Pantry
- ☑ En suite Master Bedroom in all units

AMENITIES

- ☑ Mosque and Madarasa
- ☑ Modern Library
- ☑ Shopping Centre
- ☑ Kids Play Area
- ☑ Ground Floor Parking
- ☑ Serene Garden
- ☑ Manned gatehouse with 24 hour security
- ☑ Borehole
- ☑ Back up Generator
- ☑ CCTV Surveillance
- ☑ Electric Fence

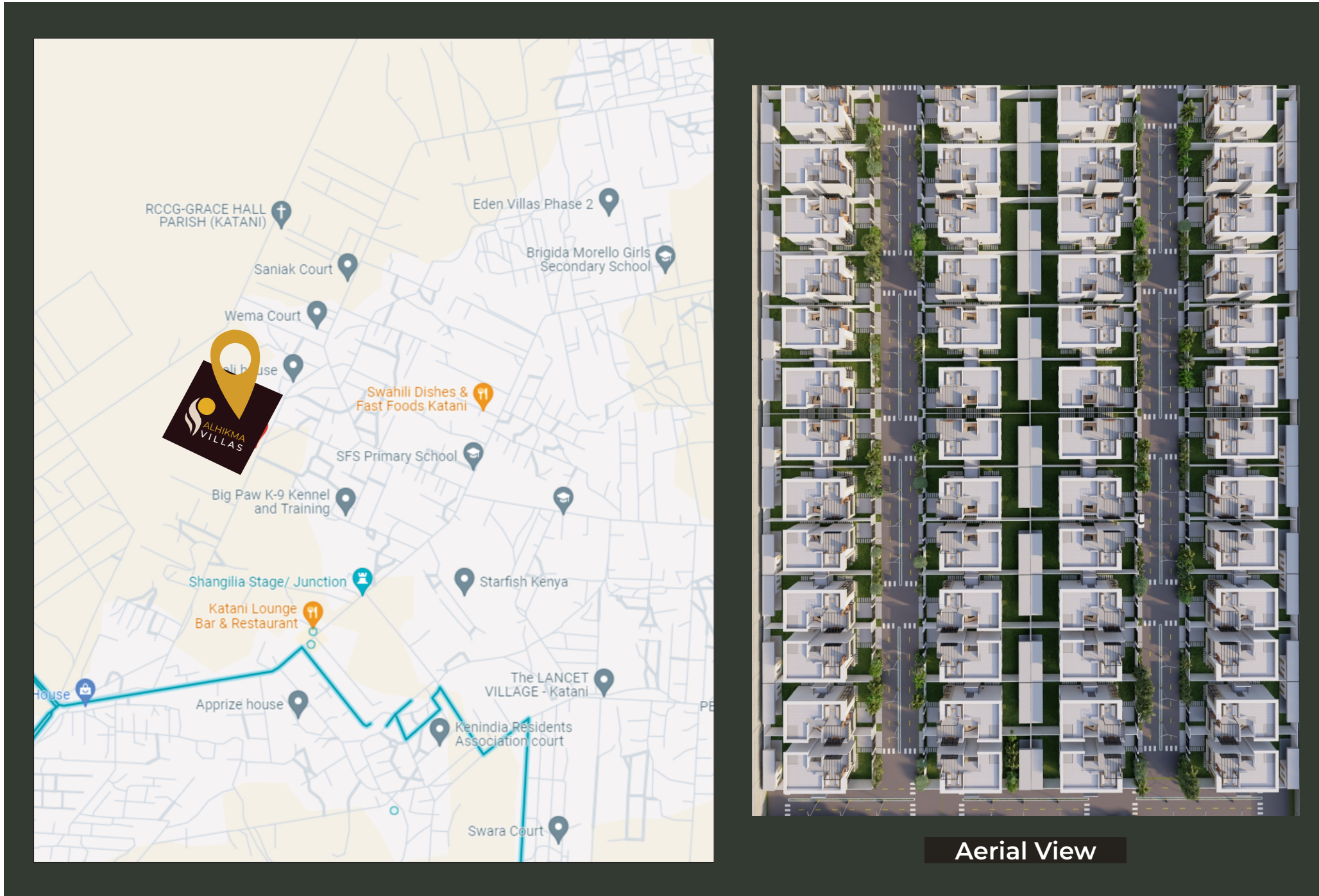
A LIVELY LOCALITY

Alhikma Villas is strategically located in a vibrant neighborhood offering the convenience of connectivity and travel, healthcare facilities, education hubs and recreational facilities. Providing good sunsets from your private terrace and Nairobi National Park just a short drive away, These Villas are gateways to a life well-connected.

- 200M from Mombasa Road
- 10 Minutes drive to JKIA
- 25 Minutes drive to Nairobi CBD



The Overhead View





Nairobi Office: BBS Mall, Eastleigh

+254716770770

www.alhikmaproperties.com

Dubai Office: Al Jaber Mall Gold Souq gate No 1, Deira Dubai

+971557715203