



*The*  
**PEARL**  
RESIDENCY



PEARL RESIDENCY



## The Gateway to Splendor

This is no mere entrance; it's an invitation. A whispered "welcome" that lingers in the breeze, promising that within these walls, life unfolds in epic proportions.



## The Serenity Nook

In our park, the atmosphere wears a cool cloak—a gentle breeze that dances through leaves and ruffles hair. Benches, like old friends, wait patiently for visitors to sit, sip coffee, and watch the world unfold.



The Pearl Residency is an exquisite Villa that offers a perfect blend of comfort and style. The elegance in our design is where every moment feels like a dream. Book your private paradise now.

# THE FRONT VIEW

A TRUE MASTERPIECE



**4 & 5 BEDROOM  
VILLAS**



**MASTER EN-SUITE**

A TRUE MASTERPIECE



# LIVING ROOM

A TRUE MASTERPIECE



  
The  
PEARL  
RESIDENCY

## OUR SLEEK COMFORT ZONE

The living room provides residents with comfort, suggesting a space where contemporary design meets cozy relaxation.

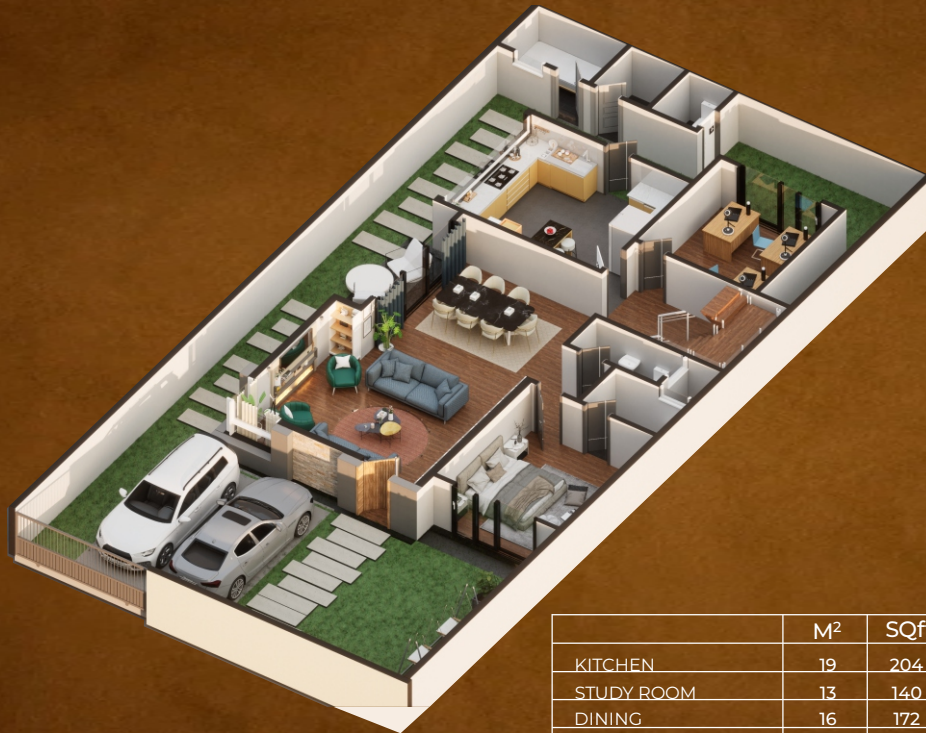


## AMENITIES

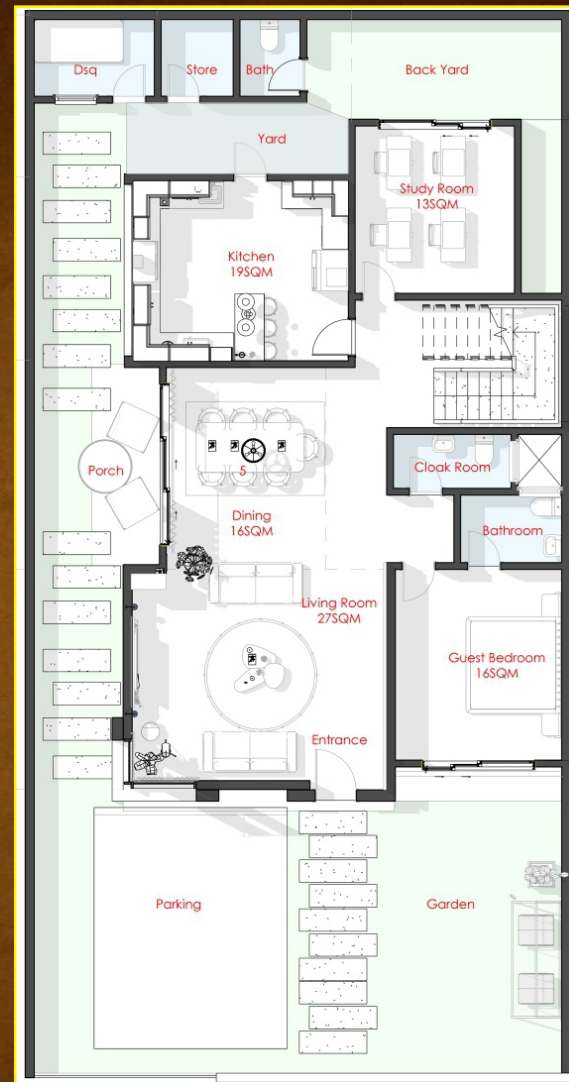
- Mosque and Madarasa
- Modern Library
- Kids Play Area
- Shopping centre
- Serene Garden
- High Security
- CCTV Surveillance
- Electric Fence
- Back up Generator
- Borehole
- Ground Floor Parking

# 3D FLOORPLAN

## GROUND FLOOR



	M <sup>2</sup>	SQft
KITCHEN	19	204
STUDY ROOM	13	140
DINING	16	172
LIVING ROOM	27	291
GUEST BEDROOM	16	172
DSQ	8	86



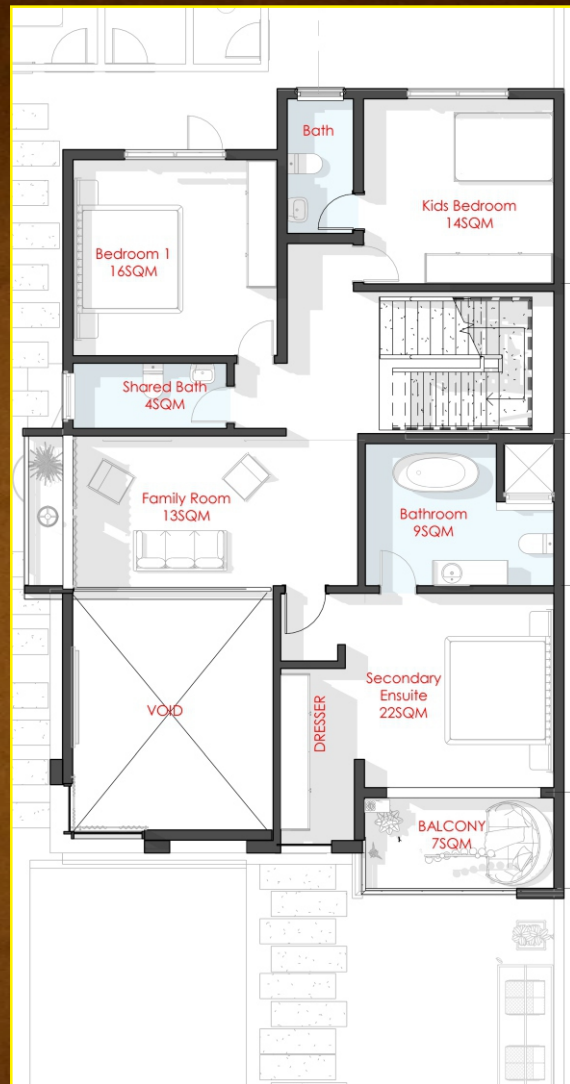


# 3D FLOORPLAN

## 1ST FLOOR



	M <sup>2</sup>	SQft
BEDROOM 1	16	172
KIDS BEDROOM	14	152
SHARED BATH	4	43
FAMILY ROOM	13	140
BATHROOM	9	97
SECONDARY ENSUITE	22	237
BALCONY	7	75



# Enjoy The Park & The Serene Garden

Amidst whispering leaves; our park weaves serenity, a haven where winding paths beckon joggers to embrace nature's rhythm.



**THE PARK**

# AERIAL VIEW



*The* PEARL  
RESIDENCY



Nairobi Office: BBS Mall, Eastleigh

+254716770770

[www.alhikmaproperties.com](http://www.alhikmaproperties.com)

Dubai Office: Al Jaber Mall Gold Souq gate No 1, Deira Dubai

+971557715203